

BRUNTON

RESIDENTIAL



FENCHURCH CLOSE, FIVE MILE PARK, NE13

Offers Over £485,000

BRUNTON

RESIDENTIAL





BRUNTON

RESIDENTIAL





BRUNTON

RESIDENTIAL

A modern, detached four-bedroom 'Plane' by Bellway situated on Fenchurch Close in Wideopen, Newcastle Upon Tyne.

This property has a well thought out layout over two floors. The ground floor has a spacious lounge, open-plan kitchen/dining room, a wonderful family room, a useful utility room and a convenient ground-floor WC. The upper floor hosts four well-proportioned bedrooms, with the master benefiting from an en-suite bathroom and a well-appointed family bathroom serving the remaining three bedrooms. The property further benefits from off-street parking, a garage and an enclosed private rear garden.

Fenchurch Close is ideally situated within a quiet, family-friendly cul-de-sac in Wideopen, Newcastle upon Tyne. The area offers an excellent range of local amenities including shops, cafés, and schools, with further facilities available nearby in Gosforth. The property benefits from convenient access to major transport links such as the A1 and A19, providing easy routes to Newcastle city centre and surrounding areas. Regular bus services also operate nearby, offering reliable public transport connections. For outdoor recreation, residents can enjoy nearby parks, open green spaces, and access to local walking and cycling routes.

BRUNTON

RESIDENTIAL



BRUNTON

RESIDENTIAL

The internal accommodation comprises: an entrance vestibule that leads into an entrance hall with stairs leading to the first-floor landing. To the left is a spacious front-aspect lounge with a walk-in bay window. To the right is a convenient ground-floor WC and storage cupboard. To the end of the hallway is a superb open-plan kitchen/dining area with French doors leading out to the rear garden. The kitchen is well-equipped with integral appliances, ample floor and wall units providing excellent storage and work surface space. The kitchen further benefits from a central island with a breakfast nook. To the right of the dining room is a family room with a further set of French doors leading out to the rear garden. Just off the dining room is a useful utility room with access into the integral garage.

The first-floor landing provides access to four well-proportioned bedrooms, with the master benefitting from a front-aspect bay window, built-in cupboards, and an en-suite bathroom. The en-suite bathroom comprises a bath, WC, washbasin, and walk-in shower cubicle. Bedroom two also benefits from a en suite shower room while a well-appointed family bathroom serves the remaining rooms and comprises a bath, washbasin, and WC.

Externally, to the front, the property has a double driveway providing off-street parking for two cars adjacent to the lawn area. To the rear is an enclosed private garden with timber fencing, predominantly laid to lawn with a paved seating area, providing a versatile outdoor space for entertaining and relaxing.



BRUNTON

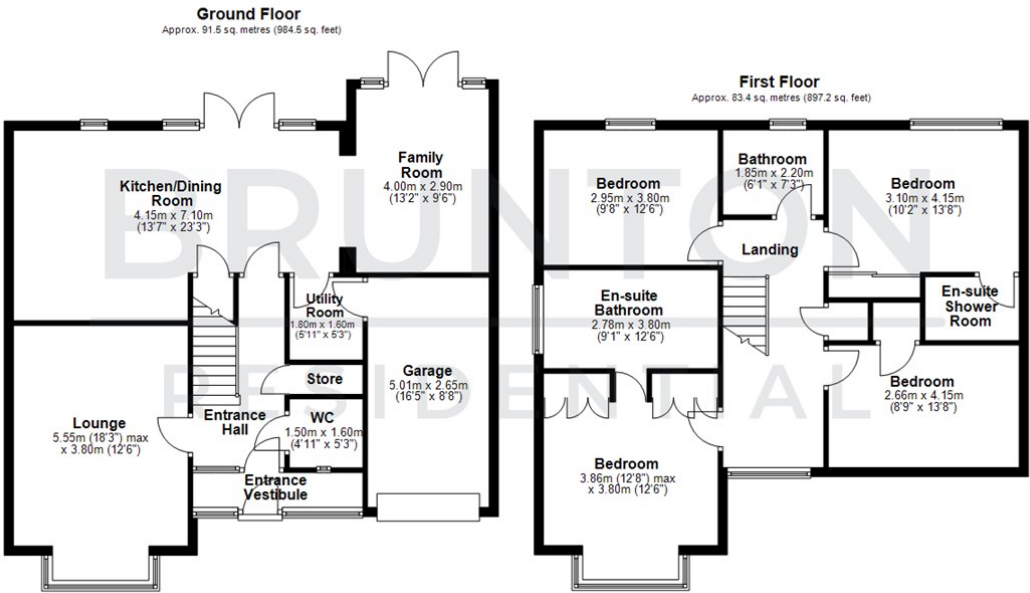
RESIDENTIAL

TENURE : Freehold

LOCAL AUTHORITY : North Tyneside CC

COUNCIL TAX BAND : E

EPC RATING : B



Energy Efficiency Rating		
	Current	Potential
Very energy efficient - lower running costs		
(92 plus) A		
(81-91) B		
(69-80) C		
(55-68) D		
(39-54) E		
(21-38) F		
(1-20) G		
Not energy efficient - higher running costs		
England & Wales	EU Directive 2002/91/EC	EU Directive 2002/91/EC

Environmental Impact (CO ₂) Rating		
	Current	Potential
Very environmentally friendly - lower CO ₂ emissions		
(92 plus) A		
(81-91) B		
(69-80) C		
(55-68) D		
(39-54) E		
(21-38) F		
(1-20) G		
Not environmentally friendly - higher CO ₂ emissions		
England & Wales	EU Directive 2002/91/EC	EU Directive 2002/91/EC